



**Protecting Facilities, Families, & the Future**



---

## **The Excavator Education Program (EEP) Handbook**

Michigan's natural gas utilities, transmission pipeline operators and MISS DIG 811 are providing this handbook to excavation contractors as



Public Act 174

**Excavation  
Handbook  
For Gas & Liquid  
Pipeline**



2020

**MISSDIG811**



part of their Pipeline Public Awareness programs. We want to work with you for safe-digging practices to help protect the public, your employees and the environment.

Please take the time to review the [EEP Handbook](#) information and share it with your co-workers.

## Back To Work May 7th!

Thursday, May 7th all construction may resume back to normal. Please take advantage of using the 14 day window for placing your dig notice requests. Also keep dig start dates as close to the actual schedule as possible.



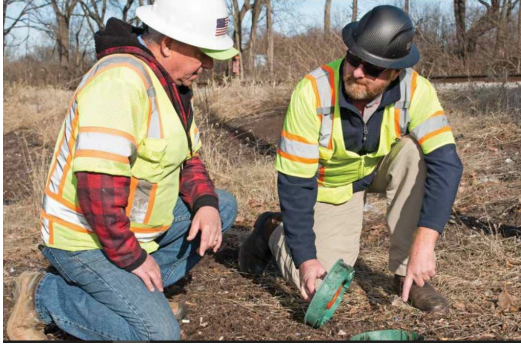
### Dig Safe, Be Safe

For more information on Back To Work click on the MITA link below:



## Creating a Culture of Safety

Being safe on the job starts with proper training and preparation. MetroNet Inc. is committed to safety, and that means creating the proper environment for



training properly. Not only do they do things the right way, but they're building a new facility to keep them at the forefront of safety in the industry into the future. Click the link for dp-PRO: <https://dp-pro.com/metronets-training-facility-creates-a-hightened-culture-of-safety/>



## MISS DIG 811 on Hire It Done Radio Show

Eric Urbain's guest spots on Hire it Done are on hiatus. Keep an ear open for information on the return of The Ticket with Adam Helfman on 97.1



## Safe Excavation Practices Workshops



### Are you able to still take a Safe Excavation Practices Workshop?

The answer is..... Yes! The MISS DIG 811 live SEP Workshops are suspended due to COVID-19 but you can still get your MISS DIG 811 Certification..... Online.

Go to [missdig.org](http://missdig.org) and you can take the Safe Excavation Practices Workshop and earn your MISS DIG 811 Certification.

Coming soon MISS DIG 811 will offer live webinars!



# 50th Fun Fact!

## MISS DIG has seen some Firsts in 50 years

### Notable Firsts

- MISS DIG 811 was the first 24-hour operated notification system in the U.S.
- MISS DIG 811 was the first computerized notification system in the U.S.
- MISS DIG 811 was the first statewide notification system in the U.S.
- MISS DIG 811 was the first notification system to offer an overhead electric program in the U.S.



## MISS DIG 811's TIP OF THE MONTH!

Understanding the difference between the *Work Date* and the *Response Due* date.

**Work Date** (dig start)- Date & time the excavator requested to start work  
**Response Due**- The legal date & time that a member facility owner/operator is required to respond to a ticket and post to Positive Response

These dates can be found when checking the status of your ticket in Positive Response and are very often the same. Always use the Response Due date to determine when the facility owner/operators are required to respond to your ticket, regardless of when you requested to start work.

### Information for ticket A000920025

Work Date	Response Due	Expires	County
04/01/20 08:47:00	04/01/20 11:50:22	04/22/20 23:59:00	LIVINGSTON

# RTE Forums

- Refresh your skills
- Join an RTE Forum Webinar
- Two RTE Forums held each month
- May topic: Full Access Refresher
- RTE Forums- Wednesday, May 20 at 1:00 PM Tuesday, May 27 at 9:00 AM



For more information or to register contact Sandy Gunville at [sgunville@missdig811.org](mailto:sgunville@missdig811.org) or Stephanie Boe at [sboe@missdig811.org](mailto:sboe@missdig811.org)



## RTE Contest!

MISS DIG 811 has a NEW CONTEST running through the months of May and June. Now's the time to take Remote Ticket Entry (RTE) training: No more waiting on hold to place a single request or only being able to place tickets for a single address. To qualify for the contest: Fill out an RTE application and complete the training in the same month (May or June). There will be 3 winners chosen by drawing each month to receive a MISS DIG 811 SWAG bag. Contest starts on Friday, May 1. Get started here: <https://www.missdig.org/programs/remote-ticket-entry.html>

There may be a slight delay in receiving your MISS DIG 811 SWAG bag. They will be sent out as soon as possible.

Thank you and good luck!



