

MISS DIG 811



Happy Halloween from MISS DIG 811



Practical Solutions for Collaboration: The Detroit Pilot

Michigan's aging infrastructure needs significant maintenance and Improvement to support new growth and investment. The formation of the 21st Century Infrastructure Commission (2016) and the recent legislation establishing the Michigan Infrastructure Commission (MIC) demonstrates the state's concern for asset management collaboration. The Commission reported a multi-billion-dollar requirement in annual updates for decades to come. The state of Michigan believes that the foundation of success in managing such a significant number of projects is cooperation between potentially conflicting projects during the design process and recognizes the benefits of establishing a program to address these challenges. (To read more, follow the link to dp-Pro Magazine <https://dp-pro.com/the-detroit-pilot/>)



Collaborative Design Program is at MISS DIG 811!



MISS DIG 811 is excited to announce the roll out of our new and improved design program, MISS DIG 811 Collaborative Design. As a software, the program allows for communication, collaboration, and scheduling of work. Webinar-style training begins this week and will be offered for the next several weeks for existing design users. The current design ticket program will be available during this transition.

Existing design program users will receive an email to set up their log-in credentials for the new platform within the next few weeks from the email address noreply.admin@missdig.pcgcs.com or noreply.admin@missdig.pelldr.net. Please set up your time log-in credentials within 24 hours of receiving the email; otherwise, the process will need to be repeated to set up your account.

Below are available training dates for October. Training takes approximately one hour. There is a maximum of 50 participants per session. Please RSVP for the session that best fits your schedule. There will be training dates available in November as well.

If you have any questions, please contact Stephanie Boe at sboe@missdig811.org

MONDAY	TUESDAY 1	WEDNESDAY 2	THURSDAY 3	FRIDAY 4
			Design-1:30PM	
7	8 Design-9AM	9 Design-9AM	10	11 Design-9AM
14	15 Design-2PM	16	17 Design-9:30AM	18 Design-9AM
21 Design-10AM	22	23 Design-9AM	24	25 Design-9AM
28	29 DESIGN-2PM	30	31	



Marine Facilities Guide

To assist in facilitating the MDPB Best Practices, MISS DIG 811 has created a Marine member code (MRNE).



Code Features

- Waived Data Processing Fee (a \$369.00 savings)
- Waived transmission and maintenance costs associated with the code for the first year
- The facility owner can direct tickets that intersect with their underwater facilities to a secondary location or parse ticket by the unique member code.
- Allows for additional Positive Response when the work site intersects the members underground and underwater facilities
- Provides facility type: GAS, WTR, PL, BRNE, SWR, etc.
- Contains contact and historical information specific to the underwater facilities

How it Works

1. Contact Member Services and tell them you want to take advantage of the Marine code.
2. The team will verify your information and send you the paperwork to collect the contact and delivery information necessary to establish the new code.
3. If you are using a contract locator, Member Services will confirm we have an Agent Letter on file that allows us to send the tickets to the third-party locator. If it is a new locator or if your existing documentation will not cover the new code, we will supply you with a new Agent Letter.
4. To complete, maps of the facilities will be needed and possibly removed from your existing database(s). Supply shape files for upload or take advantage of the three free hours of mapping services.



Contact Member Services
at Membersupport@missdig811.org or
by phone at **800-482-7161**.

New Learning Management System On the Way!

MISS DIG 811 is pleased to announce the changing of our Learning Management System (LMS) to Skillbuilder. Skillbuilder is owned by BaseCorp Learning Systems. It is a full service learning and development provider. With this big change MISS DIG 811 is ready for this new adventure. Skillbuilder is a more user-friendly LMS platform that has been tailored to suit our business requirements, enabling us to create and implement effective training programs. MISS DIG 811 will be launching the new LMS sometime in mid to late October.

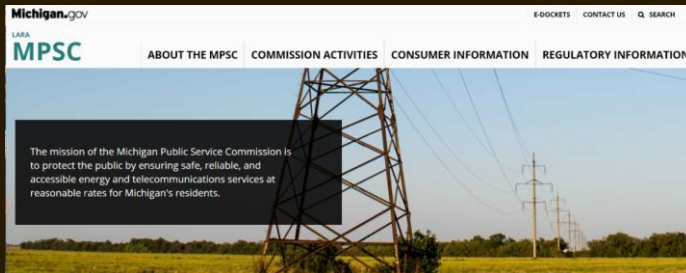


October RTE Forum

October 23rd at 1:30 pm will be the only forum held for the month. The topic of discussion: Getting the most out of Ticket



Search; including attaching documents and guidelines for working in mobile home parks.
To RSVP contact Sandra Gunville at sgunville@missdig811.org



The MPSC has updated their website. Please visit at :
<https://www.michigan.gov/mpsc>

SAFE DIGGING ADVOCATE AWARD

Nominate an individual or organization that has significantly served, improved, promoted or innovated the underground utility safety industry for the Annual Safe Digging Advocate Award.



Click on the trophy to place your nomination
by 12-31-19

The winner will receive a trophy, MISS DIG 811 swag,
& an all-expense paid trip for 2 to the
MISSDIG811 Annual Meeting being held at
the Soaring Eagle Casino
January 21-23, 2020!

**NOMINATE
SOMEONE
TODAY!**

MISS DIG | 3285 W Lapeer Rd, Auburn Hills, MI 48326

[Unsubscribe pgoddard@missdig811.org](mailto:pgoddard@missdig811.org)

[Update Profile](#) | [About Constant Contact](#)

Sent by pgoddard@missdig811.org in collaboration with

Constant Contact 

[Try email marketing for free today!](#)