



# D.I.R.T



**Damage Information Reporting  
Tool Michigan's 2015 Results**

# DAMAGE REPORTING

Public Act 174 of 2013, MISS DIG Underground Damage Prevention and Safety Act, requires that the Michigan Public Service Commission establish requirements for reporting incidents involving damage to underground facilities. The information that the MPSC will collect includes standard industry damage data, data unique to PA 174 and data that will assist in management of the data collection process. This data includes individuals involved in the damage and submission of information, date and location of the damage, facility and operation information, excavation information, notification and marking information, downtime, description of damages and root cause. The MPSC is required by PA174 to make information regarding damages and damages related to exemptions available on its website.

- **The MPSC will collect all Damage information**
- **The information submitted to the MPSC will then be stripped to keep the submissions to MIVPD anonymous. This way the damage information will be a part of the MIVDP and thereby the CGA National DIRT report.**
- **This provides one point of damage reporting that meets PA 174 requirements, adds data to MVPD and National DIRT.**

# 2015 STATS for DIRT

## Damage Information Reporting Tool

With the launch of the Damage Information Reporting Tool (DIRT, [www.cga-dirt.com](http://www.cga-dirt.com)) in late 2003, stakeholders have been able to submit underground damage and near miss reports through a completely secure, private web application. Using information submitted through the tool each year, CGA's Data Reporting and Evaluation program publishes an annual report (the DIRT Report).

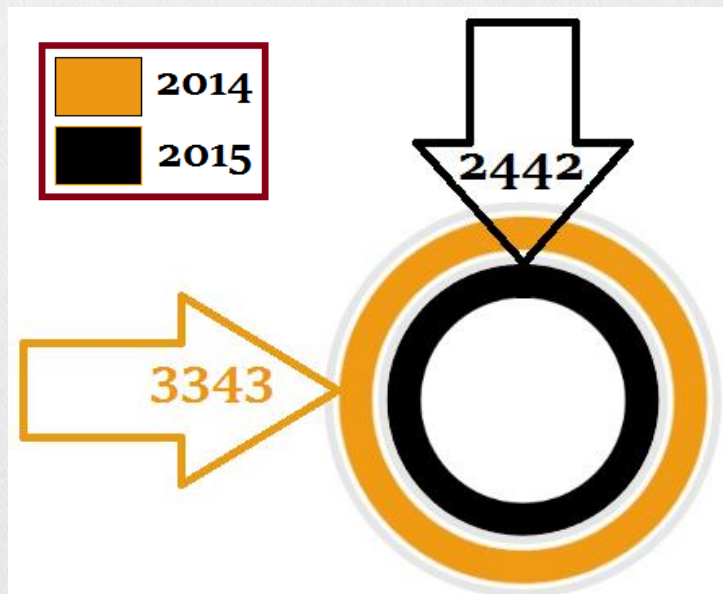


# THE SCOOP ON DIRT



In 2015, 78.44% of DIRT submissions were Provided by Natural Gas Pipeline Companies.

In 2015 there were 2442 reports submitted, down 901 submissions from 2014

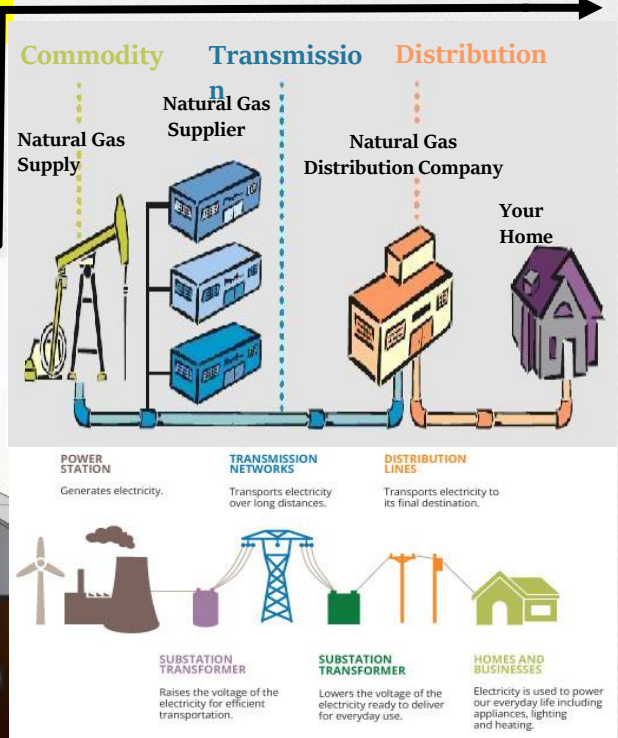
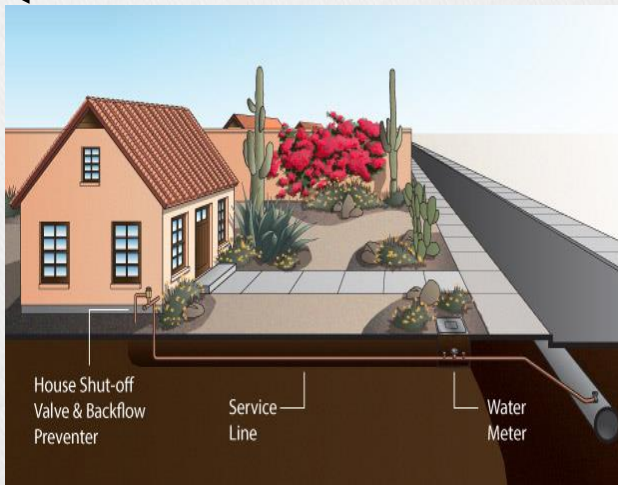


# FACILITIES DAMAGED

82% Gas  
17% Electric  
2 Water Service/Drop

# FACILITIES

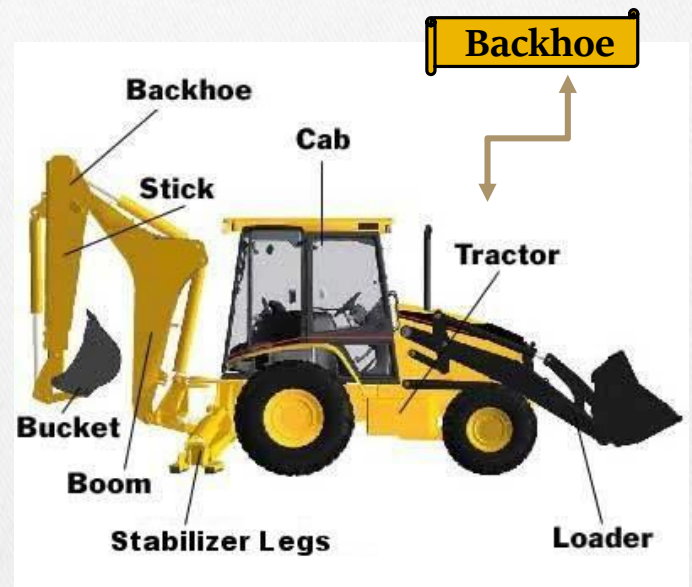
- 83% Service/Drop
- 15% Distribution
- 2% Unknown/Other
- 7 Transmission



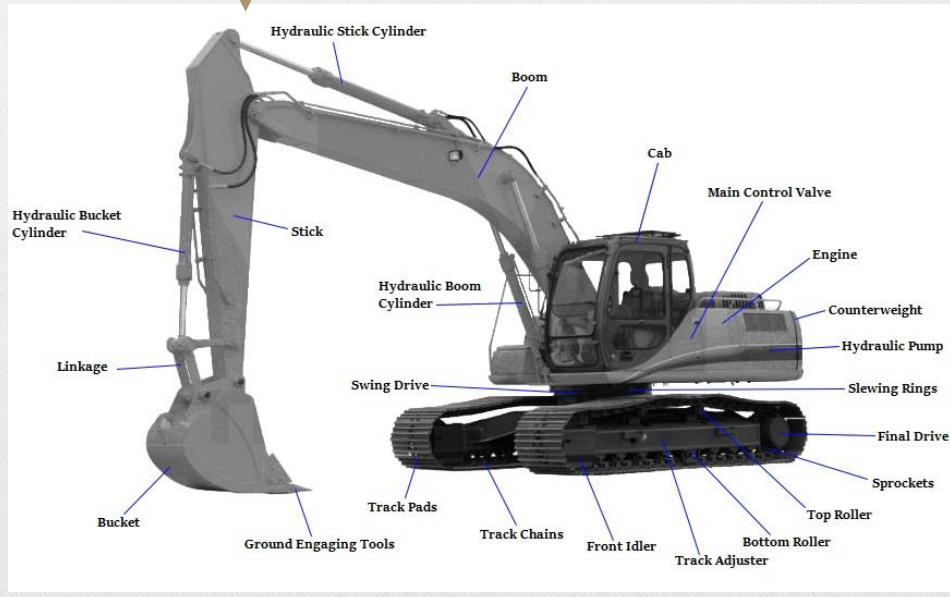
# EXCAVATION DAMAGE TYPE

- 55% Backhoe/Trackhoe
- 19% Hand Tools
- 9% Unknown/Other
- 4% Auger/Boring
- 3% Grader/Scraper

Less than 25 incidents were caused by Directional Drilling



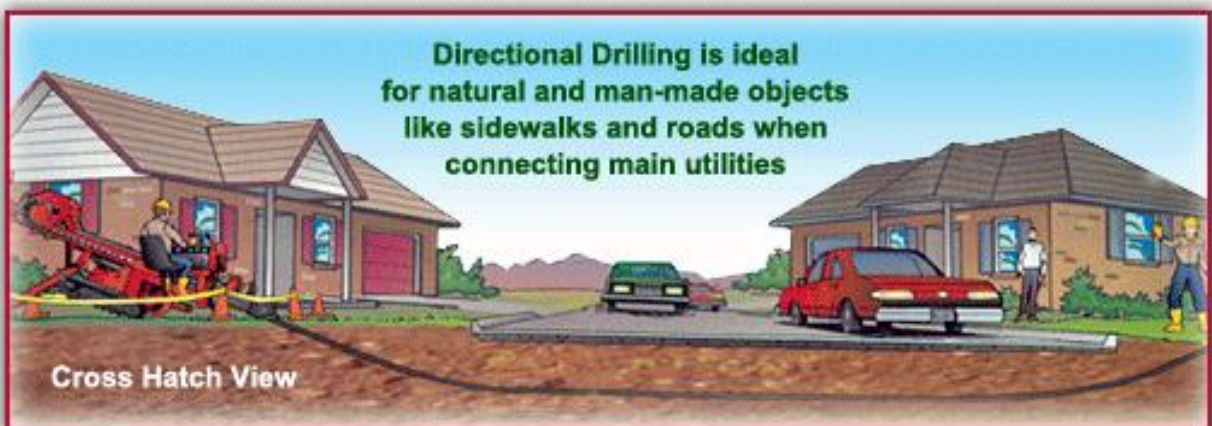
Trackho



## Less than 25 incidents were caused by Directional Drilling



- ① Directional Drill machine
- ② Rotating and pressing pipes
- ③ Pilot drill begins ground penetration
- ④ Technician with locator receiver box
- ⑤ Pilot head drilling and pressing for direction
- ⑥ Enlargement and pull-back with Reamer
- ⑦ Swivel attached to Reamer and Pipe
- ⑧ Utility Pipe being Pulled Back



# ROOT CAUSE OF DAMAGES

- ❖ 31% No Notification made to the one-call center
- ❖ 29% Failure to use hand tools where required
- ❖ 13% Other
- ❖ 7% Facility marking or location not sufficient



One-Call Notification  
Center Error

**ZERO**

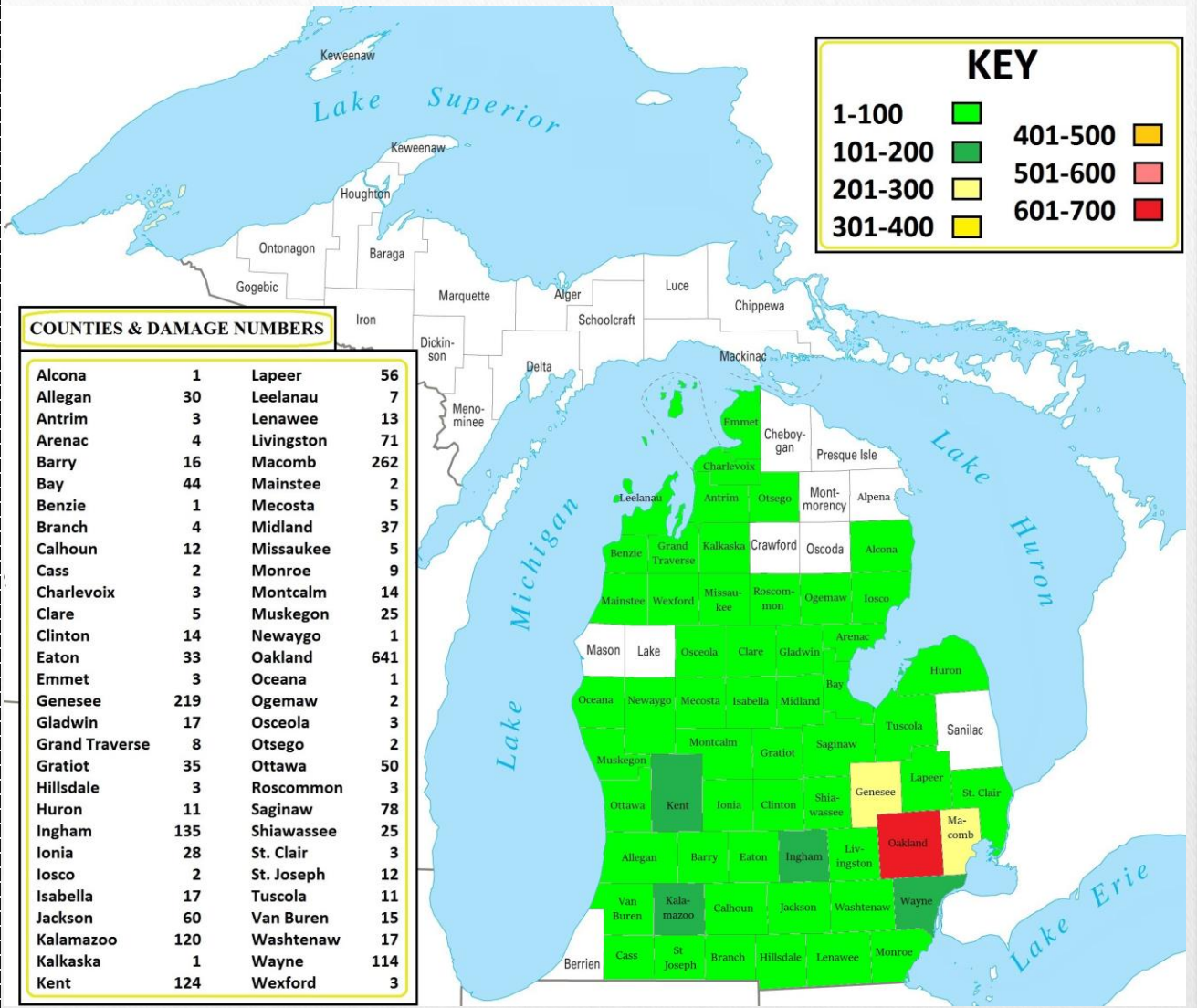
## EXCAVATOR

### TYPE

- 71% Contractor
- 13% Occupant
- 6% Municipality
- 4% Unknown/Other







### KEY

1-100	<span style="color: lightgreen;">■</span>	401-500	<span style="color: orange;">■</span>
101-200	<span style="color: green;">■</span>	501-600	<span style="color: lightcoral;">■</span>
201-300	<span style="color: yellowgreen;">■</span>	601-700	<span style="color: red;">■</span>
301-400	<span style="color: yellow;">■</span>		

#### COUNTIES & DAMAGE NUMBERS

Alcona	1	Lapeer	56
Allegan	30	Leelanau	7
Antrim	3	Lenawee	13
Arenac	4	Livingston	71
Barry	16	Macomb	262
Bay	44	Mainstee	2
Benzie	1	Mecosta	5
Branch	4	Midland	37
Calhoun	12	Missaukee	5
Cass	2	Monroe	9
Charlevoix	3	Montcalm	14
Clare	5	Muskegon	25
Clinton	14	Newaygo	1
Eaton	33	Oakland	641
Emmet	3	Oceana	1
Genesee	219	Ogemaw	2
Gladwin	17	Osceola	3
Grand Traverse	8	Otsego	2
Gratiot	35	Ottawa	50
Hillsdale	3	Roscommon	3
Huron	11	Saginaw	78
Ingham	135	Shiawassee	25
Ionia	28	St. Clair	3
Iosco	2	St. Joseph	12
Isabella	17	Tuscola	11
Jackson	60	Van Buren	15
Kalamazoo	120	Washtenaw	17
Kalkaska	1	Wayne	114
Kent	124	Wexford	3

## **Facility Marks Collected**

- 58% Unknown
- 11 Yes
- 6 No
- 2% Not Collected

## **STAKE HOLDER GROUP**

- 82% Natural Gas
- 17% Electric
- 1% Public Works
- 2 Liquid Pipeline

## **Locate Requested**

- 60% Yes
- 40% No

## **LOCATE ORGANIZER**

- 59% Contract Locator
- 1% Utility Owner



- 71% Contractor
- 13% Occupant
- 6% Municipality
- 4% Unknown
- 3% Utility
- 2% Developer
- 1% County
- 7 Farmer
- 2 State